

CRITICAL REFLECTIONS AND FUTURE PERSPECTIVES ON RESEARCH IN ARTS AND HEALTH Q1211

NETWORK MEETING

3 APRIL 2025



ABOUT PARTNER ORGANIZATIONS



INTERUNIVERSITY ORGANISATION KNOWLEDGES & ARTS, PARIS LODRON UNIVERSITY SALZBURG / UNIVERSITY MOZARTEUM SALZBURG

What happens at the interface between art and science? What happens when scientists and artists meet? The unique Inter-University Organization Arts & Knowledges, a cooperation between the Paris Lodron University of Salzburg and the Mozarteum University Salzburg, explores these questions in a wide variety of formats and programs. In a deliberate combination of local and international perspectives, three thematic focus areas and a doctoral program contextualise contemporary social issues and bring them into interdisciplinary contexts.

From October 2024, Arts & Knowledges have started the new Focus Area period, which is entitled 'Cultures in Transformation'. Building on the successful concept of practised methodological diversity, critical discourse and active engagement with current challenges, Arts & Knowledges will continue to develop and change: The aim of the three focus areas 'Figurations of Transition', 'Society and Sustainability | Contemporary Art and Cultural Production' and 'InterMediation. Music – Impact – Analysis' is to open up to new forms of cooperation and formats of knowledge production and communication. Once again, joint creation and development are at the centre of Arts & Knowledges.

The Focus Areas organize a diverse range of symposia, conferences and workshops, which are also open to an interested public. In addition, they offer students of the Paris Lodron University and the Mozarteum University interesting Advanced Studies at the intersection of science and arts in the form of two Study Supplements and one Study Focus.

The range of courses includes the Basic Modules I and II: "The Arts: Theory and Discourses" and the supplementary modules 'The Arts: Practice and Mediation' and 'Cultural Management & Cultural Production', which together form the Study Focus 'Arts, Culture and their Mediation'.

In October 2024, seven students began the doctoral program co-financed by the state of Salzburg, which focusses on 'Cultures in Transition'.



SALZBURG INSTITUTE FOR ARTS IN MEDICINE (SIAM)

The Salzburg Institute for Arts in Medicine (SIAM) was founded in 2022 by Katarzyna Grebosz-Haring and Leonhard Thun-Hohenstein as a subsidiary of the Association of Friends of Child and Adolescent Psychiatry Salzburg (Verein der Freunde der Kinder- und Jugendpsychiatrie Salzburg) to promote arts practices to support the treatment of young people with mental health issues. So far, >100 patients have participated in artistic activities, which were delivered by >25 artists from the field of music, performing arts and visual arts. Meanwhile, the practical activities have been complemented by research efforts to evaluate our model and to gather experience of how to conduct arts intervention research under the prerequisites of clinical programs for the treatment of young individuals with mental health issues. Based on the experiences that have shaped our conviction of a need to advance the SIAM to a new level, we now propose the expansion of SIAM as an institute to promote both practice and research with the installation of a scientific advisory board, the development of research proposals, and increased efforts of research dissemination by means of annual meetings and research publications.

Mission statement

SIAM is dedicated to promoting artistic activities and their value for the benefit of individuals of all ages with and without mental and physical conditions, but particularly for children and young people with mental challenges and older people with neurodegenerative conditions. The SIAM thus hosts artists, researchers, doctors, and patients (inclusive and participatory approach) representing a wealth of practical, scientific, and clinical experience and knowledge, which has the potential to transform therapeutic practice by emphasizing cultural and artistic needs of individuals on their journey to healing and rehabilitation. In addition, SIAM seeks to increase the current level of knowledge through research excellence and rigorous critical appraisal.

INTERNATIONAL NETWORK FOR THE CRITICAL APPRAISAL OF ARTS AND HEALTH RESEARCH

The International Network for the Critical Appraisal of Arts and Health Research seeks to promote excellence and critical appraisal in arts and health practice and research. It is concerned with critical appraisal and research quality and aims to develop evidence-based practice and policy – both being reliant on good quality research. The network will cultivate the development of inclusive networks for knowledge transfer of contemporary arts-for-health practices and will address the promotion of mental and physical health in all age groups, including those with acute and chronic illness and special needs. Furthermore, the network seeks international collaboration to develop clinical standards for adjuvant arts for health practices and social prescribing schemes, along with assessing their impacts.



Salzburg Global is an independent, non-profit organization dedicated to convening open-minded leaders to overcome barriers and *open a world of better possibilities*.

Over the last 77 years, we have worked with more than 40,000 Fellows from 180 countries to address the most pressing issues of our time. In 1947, our first session brought together over 100 young Europeans and Americans – including veterans of the French resistance, survivors of Nazi concentration camps, prisoners of war, and former enemies. They met at Schloss Leopoldskron, an Austrian palace that had been occupied by the Nazis in a country that was still under Allied military occupation. They wrestled with how diverse and fractured groups of people could come together and start creating the conditions for peace in the aftermath of World War II.

Today, the challenges may be different, but our mission still carries that same founding spirit: *To overcome barriers and open up a world of better possibilities*.



AGENDA

Network Meeting

Thursday, 3 April 2025

PARTICIPANT ARRIVALS

08:00 **COFFEE/TEA/PASTRIES** / *Meierhof Lobby*

08:30 **ARTISTIC WARM UP** / *Fellows Hall*
with Zuzana Ernst-Moncayo

09:00 **WELCOME** / *Fellows Hall*

Faye Hobson, Director, Culture, Salzburg Global, Austria

Leonhard Thun-Hohenstein, Chair of the Association of the Friends of Child and Adolescent Psychiatry (Verein der Freunde der Kinder- und Jugendpsychiatrie, VdFKJP); Co-Chair, SIAM, Austria

Katarzyna Grebosz-Haring, Co-Chair, International Network for the Critical Appraisal of Arts and Health Research; Co-Chair, SIAM; Senior Scientists, W&K (Paris Lodron University Salzburg, Mozarteum University Salzburg), Austria

Stephen Clift, Professor Emeritus, Sidney De Haan Research Centre for Arts and Health, Canterbury Christ Church University; Co-Chair, International Network for the Critical Appraisal of Arts and Health Research, Austria/UK

09:20 **INTRODUCTIONS** / *Fellows Hall*

Icebreakers (20m)
with Faye Hobson

Shared Values and Agreements (25m)
The community we are building
with Faye Hobson

10:05 **SHORT BREAK (COFFEE/TEA)** / *Meierhoff Lobby*

10:20 **PANEL** / *Fellows Hall*

What strategies, initiatives, policies, and innovations are advancing new forms of health, care and wellbeing?

Moderated by Stephen Clift, Professor Emeritus, Sidney De Haan Research Centre for Arts and Health, Canterbury Christ Church University; and Co-Chair, International Network for the Critical Appraisal of Arts and Health Research, Austria/UK

Theory construction in arts & health

J. Matt McCrary, Scientific Staff, Hannover Medical School, Germany

Designing and conducting trials: An example from singing and health

Mette Kaasgaard, Assistant Professor, Pulmonary Research Unit (PLUZ), Dept. of Medicine, Zealand University Hospital, Denmark & Dept. of Regional Health Research, Faculty of Health Sciences, University of Southern Denmark, Denmark

Evaluating a major public health campaign in Western Australia on arts and health

Christina Davies, Director, Centre for Arts, Mental Health and Wellbeing, University of Western Australia, Australia

Arts on prescription: Evaluation and systematic reviews

Anita Jansen, Associate Professor, Nord University and the National Competence Center for Culture, Health and Care, Norway,

Nicola Holt, Associate Professor of Psychology, University of the West of England, UK, and

Hilary Bungay, Professor of Arts Health and Wellbeing, Anglia Ruskin University, UK

11:30 SHORT BREAK (COFFEE/TEA/SNACKS) / *Meierhoff Lobby*

11:45 PROBLEM SOLVING LABS / *Fellows Hall*

In this problem-solving lab, participants will discuss future challenges and hard choices for arts and health research appraisal and application. The aim of this workshop is to make greater sense of the problem, harness the group's collective experience and explore possibility to respond effectively to the issue.

Participants will sign up for a lab in advance. Each lab will have a facilitator who will give a brief impulse talk (5m) on the topic and hold space for the discussion. A rapporteur at each session will record major points to be shared in plenary.

Introduction by Faye Hobson (5m)

1. Challenges in evidence

What strategies are needed to address the lack of quality evidence, funding, issues in publication of evidence, barriers in the peer review process and challenges in perceptions of the evidence among policymakers?

Facilitated by Stephen Clift

2. **Challenges in application**

What strategies are needed to overcome the lack of take-up of evidence, perceptions of the evidence among policy and practitioners and lack of funding?

Facilitated by Matthew Pelowski, Assistant Professor of Psychology, University of Vienna, Austria

3. **Challenges in expertise**

What strategies are needed to address the challenge of interdisciplinarity, lack of expertise in quality clinical and arts research, lack of expertise in statistics, lack of funding and education in the field?

Facilitated by Arne Bathke Professor of Statistics, Paris Lodron University Salzburg, Austria

4. **Challenges in evaluating the impact** (online)

What strategies are needed to assess the impact of art on health? What are the greatest challenges to these strategies; and how can they be mitigated?

Facilitated by Nicola Holt, Associate Professor of Psychology, University of the West of England, Bristol, UK

Followed by plenary (15m)

12:45 SHORT BREAK

12:50 IDEAS MARKETPLACE: FUTURE DIRECTIONS FOR THE NETWORK / *Fellows Hall* with **Kateryna Anselmi**, Program Manager, Peace and Justice

Fellows will propose future directions for the network in the next three years and Kataryna and Stephen will share in a plenary after lunch

13:00 LUNCH / *White Salon (Schloss)*

14:30 COLLABORATION LAB: DEVELOPING FUTURE DIRECTIONS / *Fellows Hall* with Kateryna Anselmi

This session will seek to define working groups around a common set of future directions and refine the vision by proposing recommendations for advancing the network work forward. (45m)

Groups share future directions and recommendations in plenary (15m)

15:30 SHORT BREAK (COFFEE/TEA/SNACKS) / *Meierhof Lobby*

16:00 **COLLABORATION LAB: REFINING OUR VISION AND NEXT STEPS** / *Fellows Hall*
with Kateryna Anselmi

Working groups refine their proposals based on the feedback and develop 2-3 action points towards materializing the future directions. (40m). Each group shared their next steps and the group's main contact point (15m)

17:30 **CLOSING REMARKS** / *Fellows Hall*
with Katarzyna Grebosz-Haring and Stephen Clift

17:35 Program close

18:00 **Arrival time at Leonhard's home**

18:30 **DINNER**
At Leonhard and Ursula Thun-Hohenstein's home
at Moosstrasse 122 E, 5020 Salzburg



Ahokas J. Riika

Grant researcher, post-graduate study right, University of Jyväskylä, Finland

Research Interests: Rhythm perception; Sound perception

Ahokas J. Riika is conducting research in the counter section of the disciplines of (music) education, cognitive music science and psychology. Recently her main research interest has been rhythm, and her forthcoming dissertation is concentrated on the connection between human perception of rhythm and cognition. She conducts research and investigative journalism also in other areas of music - latest popularized and scholar work has been concentrated on female-identified and non binary musicians career development possibilities.



Bamford Joshua S.

Postdoctoral Affiliate, University of Oxford, UK; Senior Lecturer, University of Jyväskylä, Finland

Research Interests: Social Bonding in the Silent Disco; Leading and Following in Tango; Perception of Randomness in Chance Music; Perception of Audio-Visual Synchrony; Sexual Dimorphism of the Human Singing Voice; Blockchain art and online communities

Bamford Joshua S. grew up in Perth, surrounded by a variety of birds, fish, reptiles, two dogs and his biologist parents. He graduated with First-class Honours in Musicology and Psychology from the University of Western Australia, and then completed a Masters in Music, Mind and Technology at the University of Jyväskylä, Finland. This was followed by an internship at the Cognitive Biology department in the University of Vienna, Austria. He recently completed his DPhil at the Institute of Cognitive and Evolutionary Anthropology, University of Oxford. Both his travels and research have fundamentally been motivated by a desire to understand how music and dance have evolved as human behaviours. While studying, he has also held numerous odd jobs as an opera singer, circus skills instructor, arts manager, tutor, research assistant, and science communicator. He is currently working as a Senior Lecturer at the University of Jyväskylä. If he had spare time, he would be out swing dancing.



Bathke Arne

Professor of Statistics, Paris Lodron University Salzburg, Austria

Research Interests: Statistical Methodology Development

Arne Bathke is Professor of Statistics and member of the Intelligent Data Analytics (IDA) Lab Salzburg and the Department of Artificial Intelligence and Human Interfaces (AIHI) at the University of Salzburg (PLUS). His research deals with developing and evaluating new statistical methods, and he has given numerous invited talks, lectures and workshops on five continents. On the other hand, he is also engaged in the application and improvement of statistical procedures in interdisciplinary cooperations with colleagues from other fields, from medicine and biology to economics, as well as in international consortia and organizations. About half of his more than 100 scientific publications in international journals result from interdisciplinary cooperation projects. Among other awards, Arne Bathke is Fellow of the American Statistical Association and an elected member of the European Academy of the Sciences and the Arts. Furthermore, he was named “Henry Clay Ambassador” by the Mayor of Lexington (Kentucky) for his civil engagement, and he has received two university-wide awards for excellence in teaching and advising. Furthermore, he is Editor-in-Chief of Biometrical Journal, as well as on the editorial board of three other international statistics journals, and organizer of an annual Biostatistics Summer School (Bild © Kolarik)).



Bungay Hilary

Professor of Arts Health and Wellbeing, Anglia Ruskin University, UK

Research Interests: Arts on Prescription; Participatory arts; Relational arts

Hilary Bungay is Professor of Arts Health and Wellbeing in the Faculty of Health Medicine and Social Care at Anglia Ruskin University. She has been researching in the field of Arts and Health research for nearly two decades and her main research interest is in the participatory arts and Arts on Prescription. She has been Principal and Co-investigator for externally funded research projects exploring the impact of the arts on health and wellbeing and has published widely in the field. Her research spans across a range of different settings including residential care homes, the community, acute hospitals, and schools. Research projects include:

exploring the impact of participatory arts on social relationships for older people in residential care settings, collaborative working between artist and care home staff, the impact of a museum-based arts activities on loneliness and older people, how 'arts in nature' practice with children can be scaled up and implemented more widely using community volunteers in schools, and social prescribing of cultural opportunities to support health and wellbeing.



Clift Stephen

Professor Emeritus, Canterbury Christ Church University

Research Interests: Singing, Creative arts, Wellbeing, Health, Critical appraisal, Health policy

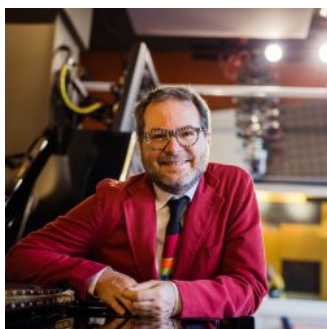
Stephen Clift is Professor Emeritus, Canterbury Christ University, and former Director of the Sidney De Haan Research Centre of Arts and Health. He is a Visiting Professor in the International Centre of Community Music, York St John University where he is working on an Arts and Humanities funded project to promote networking in the field of singing for health research. He also contributes as a Visiting Professor to the MA program on music and wellbeing in the School of Music, University of Leeds. Currently, he is associated with the Salzburg Institute of Arts in Medicine and is working with colleagues internationally to promote critical appraisal of research and evidence reviews in the fields of arts and health.



Cluderay Emily-Rose

Independent Arts & Health Practitioner-Researcher, UK

Emily-Rose Cluderay is an independent practitioner-researcher with a background in dance, arts & health, and maternal wellbeing. Her work focuses on non-clinical approaches to supporting women's wellbeing at all stages of motherhood, particularly through creative and community-based methods. She gained her PhD from the University of Derby, where her research explored how dance could be used to support wellbeing in the postnatal period, with a strong emphasis on co-designing movement-based interventions with mothers. She continues to contribute to projects in maternal health, dance & health, arts & wellbeing, and children & families, offering consultancy and research input. With experience across both academic and practical settings, she is passionate about working collaboratively to ensure that lived experiences inform meaningful and accessible wellbeing interventions.

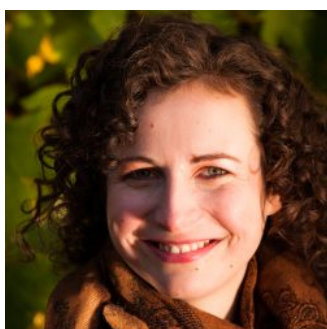


Comeau Gilles

Professor of music pedagogy, University of Ottawa, Canada

Research Interests: Music pedagogy (the method and practice of teaching music)

Gilles Clomeau is a full professor in the School of Music, Faculty of Arts, University of Ottawa, and a Fellow of the Royal Society of Canada. He is also the founder and director of the Music and Health Research Institute (MHRI) at the University of Ottawa.

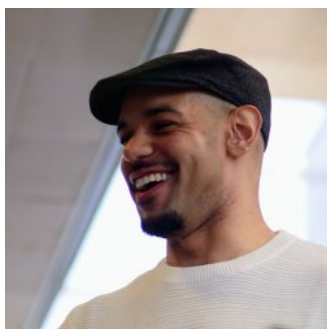


Daffern Helena

Professor in Music Technology, University of York, UK

Research Interests: Singing; Choirs; Music for wellbeing; Voices science; Acoustics; Virtual technologies

Helena Daffern is a professor of Music Science and Technology at the AudioLab in the School of Physics, Engineering and Technology at the University of York. She leads interdisciplinary research that develops new solutions to tangible challenges facing society around accessing and measuring the benefits of musical activities. She has a particular expertise in the human voice and group singing, drawing on her own experiences as a professional singer and teacher. Utilising digital technologies to develop models of virtual choirs, she has worked with partners across health, creative and tech sectors, including Age UK, Opera North, and the BBC, to improve access to musical experiences. Helena is Co-Director of CoStar Live Lab, part of the £75.6 million national R&D network of laboratories delivered by the UK Research and Innovation (UKRI) Arts and Humanities Research Council. With a focus on Live Performance, Live Lab will develop new technology to support innovations and experiences that will enrich the UK's creative industries, economy, and culture.



Danso Andrew

Postdoctoral Researcher, University of Jyväskylä, Finland

Research Interests: Music, Exercise; Affect; Attention allocation; Systematic review

My research explores intersections between music, health behaviour, and human performance, focusing on how music influences physical exercise, sport performance, cognitive control and affective responses. By integrating technology, computing, and interdisciplinary methodologies, my work explores how auditory and sensory inputs contribute to well-being and performance in exercise and sports contexts.

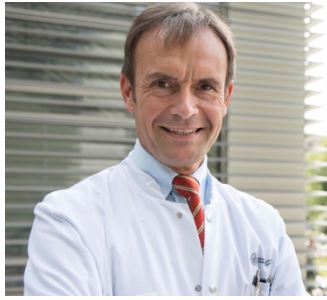


Davies Christina

Director of the Centre for Arts, Mental Health and Wellbeing, The University of Western Australia, Australia

Research Interests: Arts-health; Mental health; Wellbeing; Health Promotion; Dose

Christina Davies is Director of the Centre for Arts, Mental Health and Wellbeing at The University of Western Australia. She is also an Artist and Chief Investigator of the "Good Arts, Good Mental Health®" initiative. In 2024/5 evaluation results have shown that the world-first, population-level, trademarked, "Good Arts, Good Mental Health®" media campaign has empowered the Western Australian community by (1) raising awareness, comprehension and agreement that arts engagement can have an impact on mental wellbeing, (2) helped people realise that "you don't have to be good at art for the arts to be good for you", (3) raise community awareness of the "arts-mental health dose" of two or more hours per week, and (4) increased community intentions to engage in the arts for better mental health. With a background in epidemiology, public health, the arts and psychology, Christina's multi-award winning research and translation focuses on the areas of arts-health, health promotion and mental wellbeing. For the past 25 years, Christina has worked in academic, government and market research settings. She has successfully translated her research into policy and practice, with a number of her arts-health papers ranked by Altmetric in the top 1% of articles by attention internationally.



Debus E. Sebastian

Professor for Surgery, University of Hamburg-Eppendorf, Germany

Eike Sebastian Debus is Professor for Surgery and Chair of the Department of Vascular Medicine, University of Hamburg-Eppendorf, Germany. Sebastian Debus was Secretary General of the European Society for Vascular Surgery 2015-2020 and is currently president of the society. Being one of the leading German surgeons he was President of the German Vascular Society 2013/2014, chairs the Northern German Society of Surgery and the Northern German Society for Vascular Medicine. He edited 10 books and published more than 350 scientific papers. His main research interests are vascular epidemiology and vascular care, aortic pathologies, peripheral occlusive disease and effect of sounds on outcomes in the operation theatre. He is cofounder of the German vascular registry program and is engaged in various projects of the European Society for Vascular Surgery. In parallel to medicine he studied piano and double bass. Sebastian Debus created a multidimensional music medicine program at his University Hospital, including concerts, musicmedicine research projects, and outpatient clinic for musicians and included music medicine in the academic medical curriculum. In 2023 he founded the Brahms Billroth foundation for music medicine, with the purpose to fund scientific projects in music medicine and organize events and concerts to promote this topic to the public.



Fekete Anna

Postdoctoral researcher, University of Vienna, Austria

Research Interests: Psychology of Art; Psychology of Music; Empirical Aesthetics; Arts-Based Interventions; Wellbeing

Anna Fekete is a postdoctoral researcher currently based in the Stress Lab and Music & Health Lab (led by Prof. Urs Nater) at the University of Vienna. She is interested in the subjective and physiological effects of music listening on various aspects of health. She investigates music-based interventions in everyday settings. Previously, she focused on the well-being effects of the combination of visual art and music, both in the laboratory and in ecologically valid environments such as the museum and people's home.



Fernholz Isabel

Ärztin und Pianistin, Charité – Universitätsmedizin Berlin, Germany

Research Interests: Mental Health of musicians; Performance anxiety; Performance science; Musical activity over the lifespan in respect to mental health; Prevention

Piano studies at the UdK Berlin (Klaus Hellwig) and in Bloomington, USA, at Indiana University (Leonard Hokanson); Pedagogical and artistic diploma in piano as a major subject; Medical Studies in Berlin and Hamburg; medical and scientific work at the Charité -Universitätsmedizin Berlin at the Berlin Centre for Musicians' Medicine (BCMM) with a research focus on the mental health of musicians, especially performance anxiety and musical activity over the lifespan in respect to mental health. Since 2016 employee at the Kurt Singer Institute for Music Physiology and Musicians' Health Berlin, Hanns Eisler School of Music. Since 2021 Lecturer at the Berlin University of the Arts, applied music physiology with a focus on mental health, stress prevention, counselling for performance anxiety, use of mental techniques in performance. Specialist training in psychosomatic medicine and psychotherapy. Lecturer at the Career College of the Berlin University of the Arts. (Bild © Foto Meyer)



Grebosz-Haring Katarzyna

Senior Scientist, Paris Lodron University Salzburg, Mozarteum University Salzburg; Co-Director, Salzburg Institute for Arts in Medicine (SIAM), Austria

Research Interests: Psychophysiological, socio-psychological and aesthetic issues of music and arts with special reference to vulnerable groups, such as children and young people with mental illnesses or older people with neurodegenerative diseases

Katarzyna Grebosz-Haring is currently a Senior Scientist in the Inter-University Organization *Arts and Knowledges* (Paris Lodron University of Salzburg / Mozarteum University Salzburg) and at the Department of Art History, Musicology and Dance Studies at the Paris Lodron University of Salzburg. She studied music pedagogy, music therapy, violin and music and movement pedagogy in Poland and Austria, received her doctorate in musicology at the Mozarteum University Salzburg and habilitated in systematic musicology at the Paris Lodron University of Salzburg. Founder and co-director of the *Salzburg Institute for Arts in Medicine (SIAM)* and co-chair of the *International Network for the Critical Appraisal of Arts and Health Research*.



Kato Honda Sayaka

Physician, St. Luke's International Hospital, Toyota Regional Medical Center, Japan

Research Interests: Arts on prescription; expand evidence-based practices that promote health through the arts while continuing to develop research in this emerging field

Sayaka Honda is passionate about Art in Health, focusing on Arts on Prescription (AoP). She has also presented AoP programs from Sweden at a conference in Japan and co-authored a review paper with researchers from Sweden and the UK. Her interest lies in measuring the impact of art activities on people's well-being and exploring career paths that support this. Currently, She is a family physician in training and involved in AoP research.



Holt Nicola

Associate Professor of Psychology, University of the West of England, Bristol, UK

Research Interests: Creativity; Mental health; Wellbeing; Arts and Health; Consciousness

Nicola Holt is an Associate Professor of Psychology, at the University of the West of England, Bristol, UK. She is interested in the psychology of creativity, states of consciousness and the arts and health. She is Editor of Arts & Health.



Jensen Anita

Competence Center for Primary Healthcare Social Medicine and Health Policy, Lund University, Sweden

Dr. Anita Jensen is part of the research group Social Medicine and Health Policy at Department of Clinical Science & Centre for Primary Health Care at Lund University & Region Skåne in Sweden and is an Associate Professor at Nord University in Norway. She is the editor of Nordic Journal of Arts, Culture and Health and has published books, chapters, research articles, and reports on the health and wellbeing benefits of arts and culture engagement. Recent projects spans across the Nordic region focusing on the psychosocial impact of Arts on Prescription, population studies, and the development of regional arts and health strategies continuing to contribute to the intersection of arts, health and wellbeing.



Kalia Lorraine

Associate Professor, Division of Neurology, Department of Medicine, University of Toronto

Research Interests: My research aims to understand the key molecular pathways responsible for neurodegeneration in Parkinson's disease and to develop novel therapies by targetting these pathways.

Lorraine Kalia is an Associate Professor in the Division of Neurology at the University of Toronto in Canada. She is a movement disorders neurologist and neuroscientist whose clinical work and research program focus on improving the understanding and treatment of Parkinson's disease.



Kaasgaard Mette

Assistant Professor at Pulmonary Research Unit (PLUZ), Dept. of Medicine, Zealand University Hospital, Denmark & Dept. of Regional Health Research, Faculty of Health Sciences, University of Southern Denmark

Research interest: Clinical research, methodological rigour, singing, pulmonary rehabilitation, respiratory diseases, physiology, underpinning mechanisms

Phd, MSc, and classical singer and singing pedagogue. In my research, I investigate singing as a potential means to provide clinically relevant, health-promoting benefits on both physiological and psychosocial parameters for people with respiratory diseases. I specialise in multidisciplinary clinical research with main focus on quantitatively-based, rigorously-driven research. During my PhD, I investigated the effects of singing as a training modality in a large-scale RCT (n=270) within 10 weeks' pulmonary rehabilitation for people with chronic obstructive pulmonary disease (COPD) with use of the best-practice methodological approach, "Singing for Lung Health". Main results were published in the European Respiratory Journal (Impact Factor 24.3) and the overall trial was awarded 1st prize in the celebration of "Best clinical trials of the year 2023". Subsequently, I have expanded my research focus to further clinical research in lung diseases, specifically focusing on the efficacy and underpinning mechanisms, which also includes the establishing of a dual-centre physiological lab facility for the preparation of further clinical studies. Moreover, I am engaged in several systematic, critically-focused, theoretical studies, based on national and international collaborations.



Khalil Radwa

Neuroscience Researcher, School of Business, Social and Decision Sciences, Constructor University, Bremen, Germany

Research Interests: Psychology and Methods; Research in Experimental and Computational Neuroscience; Developmental Biology and Biotechnology

Neuroscientist, PhD in Neuroscience, Exploring the Hidden Talents to Improve Mental Health Outcomes.

Radwa's role as an interdisciplinary Neuroscientist extends beyond the lab, integrating neuroeconomic theories and developmental insights to decode human behaviours. She is passionate about bridging the gap between theoretical research and real-world applications, pushing the boundaries of what's known in the realm of neuroscience.



Köhler Friederike

Postdoctoral Researcher, University of Jyväskylä, Finland

Research Interests: Music making; Music listening; Health; Well-being; Psychological mechanisms; Climate change; Pro-environmental attitudes and behavior; Climate anxiety

Friederike Köhler is a postdoctoral researcher at the Centre of Excellence in Music, Mind, Body and Brain at the University of Jyväskylä in Finland. As a clinical and development psychologist, her research focuses on the intricate relationships between music engagement, health, and well-being. Her work explores the differences between different types of music engagement in everyday life and clinical contexts, investigating the conditions under which music can be either adaptive or maladaptive for health and well-being. She is also interested in the intersection of music and the ecological crisis, examining how musical experiences influence pro-environmental attitudes and behaviors, and how musical experiences influence pro-environmental attitudes and behaviors, and how music can help regulate climate anxiety and eco-grief.

**Kreutz Gunter**

Professor of Systematic Musicology, Carl von Ossietzky University Oldenburg, Germany

Research Interests: I am interested in the short- and long-term effects of musical activities including listening to music, learning to play musical instruments, singing, and dancing on amateur musicians using (mainly) quantitative research designs. Dependent measures include, but are not restricted to self-reports, physiological measures, biomarkers, and imaging techniques. I also appreciate the importance of qualitative research to enhance theory-building and disentangle future routes for systematic investigations. Finally, I consider systematic reviews as the perhaps most important building blocks for the guidance of research and to inform politics.

Gunter Kreutz studied in Marburg, Berlin and San Francisco, obtained his doctorate at the University of Bremen, habilitated at the Goethe University Frankfurt and has been teaching Systematic Musicology at the Carl von Ossietzky University Oldenburg since 2008. He is the author and editor of numerous specialist publications and two non-fiction books. He is also a member of various associations, e.g. the German Society for Music Psychology (DGM), the European Society for Music Perception and Cognition (ESCOM), a reviewer for numerous specialist journals and founding editor of the online journal Music Performance Research. His research was funded by the German Federal Ministry of Education and Research (BMBF).

**Lee-Menuhin Mookie**

Pianist, Neuroscientist

Mookie Lee-Menuhin, an award-winning pianist and cognitive neuroscientist, melds musical artistry with scientific rigour to explore and expand the transformative impact of the arts in society. Acclaimed for her captivating performances as both a soloist and chamber musician, she has toured globally, earning praise from critics such as Gramophone and BBC Music Magazine for her recordings. Deeply committed to music's role in healing and social change, Lee-Menuhin focuses especially on supporting children through the transformative power of music. In 2019, she participated in the Lullaby Project with El Sistema Greece, performing a concert that united refugee and local children at the Stavros Niarchos Foundation Cultural Centre in Athens. Later that year, she collaborated with UNHCR, the UN Refugee Agency, delivering a speech and hosting a concert in commemoration of the International Day of Peace. These

initiatives reflect her belief in music's ability to bridge divides, foster understanding, and create meaningful connections. As an artist-scientific advisor at the Applied Neuroscience Association (ANA) and the Salzburg Institute for Arts in Medicine, Lee-Menuhin furthers her mission of integrating art and science to transform lives. At ANA, she collaborates on advancing the application of neuroscience beyond the lab, creating science-backed strategies to tackle neuro-challenges in healthcare, education, and society. The organisation's work aligns with her passion for exploring the intersection of neuroscience, creativity, and human potential. Lee-Menuhin advocates using music and the arts to support distressed children and young people, combining therapeutic programmes with rigorous scientific validation to enhance emotional and physical well-being.

Beyond her musical achievements, Lee-Menuhin is a cognitive neuroscientist with a master's degree in applied neuroscience, earned with distinction from King's College London. Her research delves into the neuroscience of musical expertise, the brain's response to music, and how the arts can nourish a meaningful and fulfilling life (eudaimonia). She seeks to bridge the worlds of art and science, inspiring others with her unique journey, which has been highlighted in interviews and presentations, including with Women in Science and Technology at CERN and the SungJoo Foundation.



Lucendo Noregia Alicia

Doctoral Researcher, University of Jyväskylä, Finland

**McCrary J. Matt**

Scientific Staff, Hannover Medical School, Germany

Research Interests: Music Physiology; Epidemiology; Public Health, Health Systems

J. Matt MacCrary, PhD is currently appointed as Scientific Staff at the Institute of Human Genetics, Hannover Medical School (Germany); Secretary, Board of Directors and Chair, Research of the Performing Arts Medicine Association (USA); and Adjunct Lecturer at Prince of Wales Clinical School, UNSW Sydney. Dr. McCrary's diverse expertise in encapsulated by the breadth of his current projects: creation of an automated approach for commercial wearables (Garmin/ Apple Watch) to reliably capture and manage autonomic nervous system responses to music (epidemiologic and clinical applications); development of new strategies to improve access and efficiency of genetic diagnostics and counselling in cancer across the European Union; and establishment of a new artistic and clinical practice guideline for hearing health in expert performing arts. His work has been recognized and supported by Fulbright (US/Australia) and Humboldt (US/Germany) Fellowships, over 100 million EUR in grants and awards from government, non-profit, and professional organizations in Australia, the European Union, Germany, the UK, and the US, and features in 40+ international media outlets (incl. Forbes, The New York Times, the Guardian, ABC Radio National (Australia)).

**Musgrave George**

Associate Professor in Cultural Sociology, Goldsmiths, University of London, UK

Research Interests: musicians' psychosocial working lives, specialising in mental health and wellbeing in the music industry

George Musgrave is an interdisciplinary sociologist of music, who has been researching musicians' psychosocial working lives for the past 15 years. His research concerns the psychological experiences and working conditions of creative careers, with a focus on mental health and wellbeing in the music industry. He has collaboratively undertaken two major research projects - 'Can Music Make You Sick?' (UK) and 'When Music Speaks' (Denmark) - on mental health and the music industry. The book of the former was an Amazon Number 1 Best Seller in the Sociology of Work. His research has been published in world-leading journals including The Lancet, The Lancet Psychiatry, Poetics, Cultural Trends,

Musicae Scientiae, Frontiers in Public Health and Psychology of Music. He is regularly invited to speak internationally on the subject and has appeared on media including BBC News, BBC Radio 4, Times Radio and the Financial Times.



Nadal Marcos

Professor, University of the Balearic, Spain

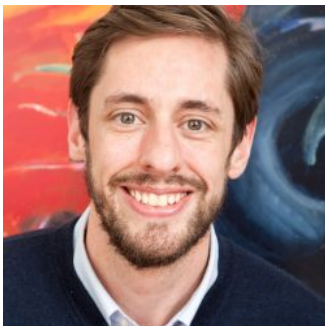
Research Interests: Psychological aesthetics, Neuroaesthetics, Evolution of the mind



Nater Urs Markus

Professor of Clinical Psychology of Adulthood, University of Vienna, Austria

Research Interests: Experimental stress research, Identification of mechanisms of stress-related morbidity, Development of stress measurement methods, Identification of biomarkers of stress-related medically unexplained physical complaints (especially chronic fatigue), Investigation of stress-relevant systems, such as hypothalamic-pituitary-adrenal axis (HPA axis), immune system, and autonomic nervous system, with focus on peripheral markers and gene expression profiles, Investigation of the effects of interventions on the psychophysiological stress response (stress management training, music).



Pelowski Matthew

Assoz. Prof. of Psychology of Cognitive and Neuroaesthetics, University of Vienna, Austria

Research Interests: Visual art experience; Neurodegeneration; Museum studies; Art interventions

Associate Professor of Cognitive and Neuroaesthetics, Faculty of Psychology, University of Vienna. Head of the ARTIS Lab (Art Research on Transformations of Individuals and Society; artislabor.org).
<https://ucrisportal.univie.ac.at/en/persons/matthew-pelowski>



Pickard Angela

Professor of Dance Education, Director of Sidney de Haan Research Centre for Arts and Health, Canterbury Christ Church University, UK

Research Interests: Dance/arts; Children and young people; Social inequalities; Physical and psychological wellbeing

Angela Pickard is the first Professor of Dance education in the UK and the Director of Sidney De Haan Research Centre for Arts and Health.



Schurig Eva

Postdoctoral Researcher, Carl von Ossietzky University Oldenburg, Germany

Research Interests: Music listening; Music and health; Entry exams

Eva Schurig is a postdoctoral research assistant at the Carl von Ossietzky Universität Oldenburg. Her experiences cover qualitative as well as quantitative research in areas such as mobile music listening, musical activities of young people or hearing health. She is part of the editorial board of the Yearbook of Music Psychology and the journal MAiA.



Seckman Abdul

Academic Tutor, Cardiff Metropolitan University, UK

Research Interests: Music; Singing; Art: Chronic Diseases; Stroke; Wound Care

Abdul, born in Zimbabwe, moved to Cardiff in 2002 for undergraduate and master's studies in Biomedical Sciences. He later studied Public Health and Epidemiology in the Caribbean before completing a PhD in evidence-based wound care in 2016. Formerly the manager of Stroke Hub Wales, a Welsh Government initiative for stroke research and education, he is now Head of Research and Academia at Healthcare Business Solutions UK. An accomplished artist and musician, Abdul won an art scholarship at Zimbabwe's Peter Birch Art School. His watercolor, acrylic, and oil paintings have been exhibited in Zimbabwe's National Gallery and sold internationally, including in Israel, Switzerland, and the U.K. He has also auctioned artwork in Cardiff and Worcester to support charities such as the Lindsay Leg Club® Foundation, Stroke Association, and Bobath Charity. A passionate fundraiser, Abdul has organised and performed in musical concerts benefiting charities like Tenovus Cancer Care, Shelter Cymru, and Breast Cancer Care.

**Short Alison**

Associate Professor in Creative Music Therapy, Western Sydney University, Australia

Diploma in Theology, University of Divinity
Graduate Certificate in Uni Learning & Teaching, University of New South Wales
Doctor of Philosophy
Master of Arts, New York University
Music Therapist
Bachelor of Music, University of Melbourne

Links to the websites:

<https://researchers.westernsydney.edu.au/en/persons/alison-short>

https://www.westernsydney.edu.au/thri/team/members/alison_short

**Skov Martin**

Senior Researcher, Copenhagen University Hospital, Denmark

Research Interests: Reward processing, sensory valuation, neuroaesthetics decision-making

**Studnicka Michael**

Paracelsus Medical University, Salzburg, Austria

Head of the University Clinic for Pneumology/ Pulmonary Medicine



Michael Koon Boon Tan

Dean (Research and Knowledge Exchange), University of the Arts Singapore

Research Interests: Mental health literacy; Ageing; Nature connectedness; Compassionate communities; End-of-life planning and loss; Health justice; and Creative critical pedagogy

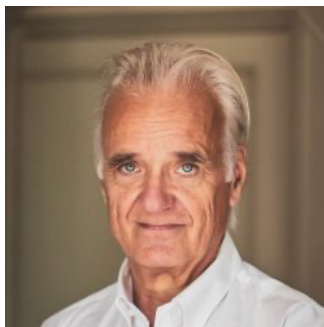
Dr. Michael Tan is the Dean of Research and Knowledge Exchange at the University of the Arts in Singapore, Nanyang Academy of Arts. As a leading creative health researcher, and advocate in Singapore, his contributions include the State of Arts and Health Development Singapore and numerous cross sectoral/ discipline collaborations with stakeholders such as AIC, NAC, Duke-NUS to explore, interrogate, and imagine the culture of care. His ongoing inquiries include mental health, end of life and disability.



Tenley Martin

Senior Lecturer, Leeds Beckett University, UK

Tenley Martin is a senior lecturer in Music, percussionist, and ethnomusicologist. Her research, which is ethnographic and practice-led, explores music globalisation, as well as music's effectiveness as a mechanism for individual and societal wellbeing.



Thun-Hohenstein Leonhard

Chair of the Association of the Friends of Child and Adolescent Psychiatry (Verein der Freunde der Kinder- und Jugendpsychiatrie, VdFKJP); Co-Chair, SIAM, Austria

Research Interests: Arts in medicine; Resilience

Child and adolescent psychiatrist; pediatrician; psychodrama therapist; Founder and head (2004-2021) of Univ. Department for Child and adolescent psychiatry in Salzburg at PMU/SALK; CAP-Coach and Supervisor; artist; Since 1993 working with arts in child psychiatry; Founder and Co-chair of the Salzburg Institute for Arts in Medicine (SIAM);

<https://www.vereinderfreunde-kjp.org/siam/>



Trupp MacKenzie

*Radboud University Medical Center (Netherlands), and
University of Vienna, Austria*

*Research Interests: Arts-based interventions; Well-being;
Empirical aesthetics*

CRITICAL REFLECTIONS AND FUTURE PERSPECTIVES ON RESEARCH IN ARTS AND HEALTH *INTERNATIONAL CONFERENCE*

4 APRIL 2025



ABOUT PARTNER ORGANIZATIONS



INTERUNIVERSITY ORGANISATION KNOWLEDGES & ARTS, PARIS LODRON UNIVERSITY SALZBURG / UNIVERSITY MOZARTEUM SALZBURG

What happens at the interface between art and science? What happens when scientists and artists meet? The unique Inter-University Organization Arts & Knowledges, a cooperation between the Paris Lodron University of Salzburg and the Mozarteum University Salzburg, explores these questions in a wide variety of formats and programs. In a deliberate combination of local and international perspectives, three thematic focus areas and a doctoral program contextualise contemporary social issues and bring them into interdisciplinary contexts.

From October 2024, Arts & Knowledges have started the new Focus Area period, which is entitled 'Cultures in Transformation'. Building on the successful concept of practised methodological diversity, critical discourse and active engagement with current challenges, Arts & Knowledges will continue to develop and change: The aim of the three focus areas 'Figurations of Transition', 'Society and Sustainability | Contemporary Art and Cultural Production' and 'InterMediation. Music – Impact – Analysis' is to open up to new forms of cooperation and formats of knowledge production and communication. Once again, joint creation and development are at the centre of Arts & Knowledges.

The Focus Areas organize a diverse range of symposia, conferences and workshops, which are also open to an interested public. In addition, they offer students of the Paris Lodron University and the Mozarteum University interesting Advanced Studies at the intersection of science and arts in the form of two Study Supplements and one Study Focus.

The range of courses includes the Basic Modules I and II: "The Arts: Theory and Discourses" and the supplementary modules 'The Arts: Practice and Mediation' and 'Cultural Management & Cultural Production', which together form the Study Focus 'Arts, Culture and their Mediation'.

In October 2024, seven students began the doctoral program co-financed by the state of Salzburg, which focusses on 'Cultures in Transition'.



SALZBURG INSTITUTE FOR ARTS IN MEDICINE (SIAM)

The Salzburg Institute for Arts in Medicine (SIAM) was founded in 2022 by Katarzyna Grebosz-Haring and Leonhard Thun-Hohenstein as a subsidiary of the Association of Friends of Child and Adolescent Psychiatry Salzburg (Verein der Freunde der Kinder- und Jugendpsychiatrie Salzburg) to promote arts practices to support the treatment of young people with mental health issues. So far, >100 patients have participated in artistic activities, which were delivered by >25 artists from the field of music, performing arts and visual arts. Meanwhile, the practical activities have been complemented by research efforts to evaluate our model and also to gather experience of how to conduct arts intervention research under the prerequisites of clinical programs for the treatment of young individuals with mental health issues. Based on the experiences that have shaped our conviction of a need to advance the SIAM to a new level, we now propose the expansion of SIAM as an institute to promote both practice and research with the installation of a scientific advisory board, the development of research proposals, and increased efforts of research dissemination by means of annual meetings and research publications.

Mission statement

SIAM is dedicated to promoting artistic activities and their value for the benefit of individuals of all ages with and without mental and physical conditions, but particularly for children and young people with mental challenges and older people with neurodegenerative conditions. The SIAM thus hosts artists, researchers, doctors, and patients (inclusive and participatory approach) representing a wealth of practical, scientific, and clinical experience and knowledge, which has the potential to transform therapeutic practice by emphasizing cultural and artistic needs of individuals on their journey to healing and rehabilitation. In addition, SIAM seeks to increase the current level of knowledge through research excellence and rigorous critical appraisal.

SALZBURG INTERNATIONAL NETWORK FOR THE CRITICAL APPRAISAL OF ARTS AND HEALTH RESEARCH

International Network for the Critical Appraisal of Arts and Health Research seeks to promote excellence and critical appraisal in arts and health practice and research. It is concerned with critical appraisal and research quality and aims to develop evidence-based practice and policy – both being reliant on good quality research. The network will cultivate the development of inclusive networks for knowledge transfer of contemporary arts-for-health practices and will address the promotion of mental and physical health in all age groups, including those with acute and chronic illness and special needs. Furthermore, the network seeks international collaboration to develop clinical standards for adjuvant arts for health practices and social prescribing schemes, along with assessing their impacts.



Salzburg Global is an independent, non-profit organization dedicated to convening open-minded leaders to overcome barriers and *open a world of better possibilities*.

Over the last 77 years, we have worked with more than 40,000 Fellows from 180 countries to address the most pressing issues of our time. In 1947, our first session brought together over 100 young Europeans and Americans – including veterans of the French resistance, survivors of Nazi concentration camps, prisoners of war, and former enemies. They met at Schloss Leopoldskron, an Austrian palace that had been occupied by the Nazis in a country that was still under Allied military occupation. They wrestled with how diverse and fractured groups of people could come together and start creating the conditions for peace in the aftermath of World War II.

Today, the challenges may be different, but our mission still carries that same founding spirit: *To overcome barriers and open up a world of better possibilities*.



PROGRAM

CONFERENCE: Critical Reflections and Future Perspectives on Research in Arts and Health

Friday, 4 April 2025

PARTICIPANT ARRIVALS

08:00 **REGISTRATION/COFFEE/TEA/PASTRIES** / *Meierhof Lobby*

09:00 **ICEBREAKERS** / *Fellows Hall*
with Valerie Oberleithner

09:25 **WELCOME** / *Fellows Hall*

Ben Glahn, Deputy CEO and Managing Director, Programs, Salzburg Global, Austria

Thomas Ballhausen, Head of W&K (Paris Lodron University Salzburg & Mozarteum University Salzburg), Austria

Leonhard Thun-Hohenstein, Chair of the Association of the Friends of Child and Adolescent Psychiatry (Verein der Freunde der Kinder- und Jugendpsychiatrie, VdFKJP); Co-Chair, SIAM, Austria

Katarzyna Grebosz-Haring, Main organiser of the conference; Senior Scientist, W&K (Paris Lodron University Salzburg & Mozarteum University Salzburg); Director SIAM, Co-chair of the International Network for the Critical Appraisal of Arts and Health Research, Austria

09:45 **SESSION 1** / *Fellows Hall*

What is the current state of scientific evidence in the field of arts and health and its role in formulating policy and guiding practice?

Introduction and moderation by **Dame Janet Ritterman**, Chancellor of Middlesex University, UK

Nils Fietje, Founding Co-Director, Jameel Arts & Health Lab, and Technical Officer for the BCI Unit, WHO Regional Office for Europe, Denmark (online)

Kornelia Kiss, Culture Action Europe, Belgium

Stephen Clift, Canterbury Christ Church University, UK

10:45 **SHORT BREAK (COFFEE/TEA/SNACKS)** / *Meierhof Lobby*

11:00 SESSION 1: CONVERSATION / Fellows Hall

Welcome Univ.-Prof. Dr. Bernhard Fügenschuh, Rector, Paris Lodron University Salzburg, Austria

Small group discussions (30m) followed by reflection in plenary

Moderated by **Christine Bauer**, Paris Lodron University Salzburg, Austria

12:00 LUNCH / Marble Hall (Schloss)

13:30 SESSION 2 / Fellows Hall

What is the value of lived experience, narrative testimony and case studies in the field of arts and health?

Moderated by **Sebastian Debus**, University, Hospital Hamburg-Eppendorf, Germany

With **Jill K Sonke**, Director of Research Initiatives, Center for Arts in Medicine, University of Florida, US

Hannah Watersoon, Research and Policy Manager, National Centre for Creative Health, University College London, UK (video message)

Eva Schurig, Researcher, Carl von Ossietzky University of Oldenburg, Germany

Arne Bathke, Professor, Paris Lodron University Salzburg, Austria

14:30 SHORT BREAK (COFFEE/TEA) / Meierhof Lobby

14:45 SESSION 2: CONVERSATION / Fellows Hall

Small group discussions followed by reflection in plenary

Moderated by **Christine Bauer**, Paris Lodron University Salzburg, Austria

15:45 SHORT BREAK (COFFEE/TEA/SNACKS) / Meierhof Lobby

16:00 SESSION 3: PANEL DISCUSSION / Fellows Hall

What can we learn from international best practices, and how can we apply these insights to shape the future of Austria and globally? Can we arrive at a consensus in the best interests of promoting the highest quality research, reviews and practice in the field of arts and health?

Moderated by J. **Matt McCrory**, Hannover Medical School, Germany

With **Arne Bathke**, Paris Lodron University Salzburg, Austria

Christina Davies, Centre for Arts, Mental Health and Wellbeing WA, School of Allied Health & School of Humanities, The University of Western Australia, Australia

Nils Fietje, Founding Co-Director, Jameel Arts & Health Lab, and Technical Officer for the BCI Unit, WHO Regional Office for Europe, Denmark (online)

Anita Jensen, Competence Center for Primary Healthcare Social Medicine and Health Policy, Lund University, Sweden

Janet Ritterman, former Director of the Royal College of Music, London, UK

Leonhard Thun-Hohenstein, Salzburg Institute for Arts in Medicine (SIAM), Austria

17:30 CLOSING REMARKS AND PERFORMANCE / Fellows Hall

with **Katarzyna Grebosz-Haring**, W&K, Mozarteum University Salzburg, Paris Lodron University Salzburg, Austria

Vivien Conacher, Mezzo Soprano, London/Salzburg

18:00 Program close

18:30 DINNER / Marble Hall (Schloss) (invited guests)

SPEAKERS AND MODERATORS



Arne Bathke

Professor of Statistics, Paris Lodron University Salzburg, Austria

Statistical Concepts, Evidence-Based Medicine, and their implications for Research on the Effects of Music and Arts on Health

Statistical concepts deal with quantifying uncertainty, and they provide one of the key scientific bases on which decisions can be founded as to, for example, whether an observed effect is beyond mere chance variation. Applying these concepts in clinical contexts has catalyzed the strong development of evidence-based medicine in the last decades of the 20th century. These concepts and the resulting methodological approaches have also been transferred to other fields, and they keep being fine-tuned, responding to new trial designs and research questions. Also, they have informed the several guidelines that have been articulated towards reproducibility of scientific research. How can we make sure that research on the effects of music and arts on health is also being built on this solid rock that constitutes one of the foundations of modern science?

Arne Bathke is Professor of Statistics and member of the Intelligent Data Analytics (IDA) Lab Salzburg and the Department of Artificial Intelligence and Human Interfaces (AIHI) at the University of Salzburg (PLUS). His research deals with developing and evaluating new statistical methods, and he has given numerous invited talks, lectures and workshops on five continents. On the other hand, he is also engaged in the application and improvement of statistical procedures in interdisciplinary cooperations with colleagues from other fields, from medicine and biology to economics, as well as in international consortia and organizations. About half of his more than 100 scientific publications in international journals result from interdisciplinary cooperation projects.

Among other awards, Arne Bathke is Fellow of the American Statistical Association and an elected member of the European Academy of the Science and the Arts. Furthermore, he was named "Henry Clay Ambassador" by the Mayor of Lexington (Kentucky) for his civil

engagement, and he has received two university-wide awards for excellence in teaching and advising. Furthermore, he is Editor-in-Chief of Biometrical Journal, as well as on the editorial board of three other international statistics journals, and organizer of an annual Biostatistics Summer School.



Christine Bauer

Professor EXDIGIT, Paris Lodron University Salzburg, Austria

Christine Bauer is a Professor of Interactive Intelligent Systems at the Department of Artificial Intelligence and Human Interfaces (AIHI) at the Paris Lodron University Salzburg (PLUS), Austria, and a Co-Lead of the focus area "InterMediation. Music—Effect—Analysis" at the inter-university institution Wissenschaft & Kunst. Her research focuses on recommender systems, with a specific emphasis on the music and media domains. Core interests in her research activities are fairness in algorithmic decision-making and multi-method evaluation. Throughout her academic career, she has held positions at various institutions, including Assistant Professor at Utrecht University, The Netherlands, Senior Postdoc Researcher at Johannes Kepler University Linz, Austria, and Visiting Fellow at the Carnegie Mellon University, PA, USA. For more information, see her website <https://christinebauer.eu>



Stephen Clift

*Professor Emeritus, Canterbury Christ Church University;
Visiting Professor, York St John University;
Visiting Professor, University of Leeds;
Professorial Fellow, Royal Society for Public Health, UK*

On the need for critical appraisal of arts and health research

The last twenty-five years has seen a remarkable growth of research on the contribution of arts, music and cultural engagement for health and wellbeing. This is reflected in major evidence reviews founded by the World Health Organisation and the European Commission, national government departments, arts councils and arts and health bodies throughout the world. A general consensus has emerged that both receptive and active involvement in arts, music and cultural activities is good for our general wellbeing and our general wellbeing and our mental and physical health. Nevertheless, there is need for caution, and in this presentation, I will argue that it is essential that we approach such claims with an approach such claims with an appropriate degree of scepticism, I will present findings, from recent exercises in the critical appraisal of primary studies, cited in recent major evident reviews. The results show that exaggerated claims have been made for the effectiveness of arts interventions for health.

Stephen Clift is Professor Emeritus, Canterbury Christ University, and former Director of the Sidney De Haan Research Centre of Arts and Health. He is a Visiting Professor in the International Centre of Community Music, York St John University where he is working on an Arts and Humanities funded project to promote networking in the field of singing for health research. He also contributes as a Visiting Professor to the MA program on music and wellbeing in the School of Music, University of Leeds. Currently, he is associated with the Salzburg Institute of Arts in Medicine and is working with colleagues internationally to promote critical appraisal of research and evidence reviews in the fields of arts and health.



Christina Davies

*Director, Centre for Arts, Mental Health and Wellbeing
WA, School of Allied Health & School of Humanities, The
University of Western Australia*

A/Prof Christina Davies is Director of the Centre for Arts, Mental Health and Wellbeing at The University of Western Australia. She is also an Artist and Chief Investigator of the "Good Arts, Good Mental Health®" initiative. In 2024/5 evaluation results have shown that the world-first, population-level, trademarked, "Good Arts, Good Mental Health®" media campaign has empowered the Western Australian community by (1) raising awareness, comprehension and agreement that arts engagement can have an impact on mental wellbeing, (2) helped people realise that "you don't have to be good at art for the arts to be good for you", (3) raise community awareness of the "arts-mental health dose" of two or more hours per week, and (4) increased community intentions to engage in the arts for better mental health. With a background in epidemiology, public health, the arts and psychology, Christina's multi-award winning research and translation focuses on the areas of arts-health, health promotion and mental wellbeing. For the past 25 years, Christina has worked in academic, government and market research settings. She has successfully translated her research into policy and practice, with a number of her arts-health papers ranked by Altmetric in the top 1% of articles by attention internationally.



Sebastian Debus

Professor for Surgery, University Hospital Hamburg-Eppendorf, Germany

Eike Sebastian Debus is Professor for Surgery and Chair of the Department of Vascular Medicine, University of Hamburg-Eppendorf, Germany. Sebastian Debus was Secretary General of the European Society for Vascular Surgery 2015-2020 and is currently president of the society. Being one of the leading German surgeons he was President of the German Vascular Society 2013/2014, chairs the Northern German Society of Surgery and the Northern German Society for Vascular Medicine. He edited 10 books and published more than 350 scientific papers. His main research interests are vascular epidemiology and vascular care, aortic pathologies, peripheral occlusive disease and the effect of sounds on outcomes in the operation theatre. He is cofounder of the German vascular registry program and is engaged in various projects of the European Society for Vascular Surgery.

In parallel to medicine he studied piano and double bass. Sebastian Debus created a multidimensional music medicine program at his University Hospital, including concerts, musicmedicine research projects, and an outpatient clinic for musicians and included music medicine in the academic medical curriculum. In 2023 he founded the Brahms Billroth foundation for music medicine, with the purpose to fund scientific projects in music medicine and organize events and concerts to promote this topic to the public.



Nils Fietje

Technical Officer for the BCI Unit, WHO Europe, Denmark

The frontiers of culture, arts, and health at WHO

Since publishing a scoping review on the arts and health evidence base in 2019, WHO Europe has been engaging in developments in the field. This presentation will provide an overview of WHO's work in the area, including an update on the forthcoming Jameel Arts&Health Lab-Lancet Global Series on arts and health.

Nils Fietje is a Technical Officer in the Behavioural and Cultural Insights Unit at the WHO Regional Office for Europe. As part of the BCI Unit, he is leading efforts to understand how cultural contexts affect and interact with health and well-being, across the life-course and throughout the continuum of care. This work includes a particular focus on arts and health, having published the first-ever WHO report on the evidence base for arts and health interventions. Nils is also a co-founder and co-director of the Jameel Arts & Health Lab, which seeks to lift up arts and health research, policy development, capacity building, and public engagement globally.



Anita Jensen

Associate Professor, Competence Center for Primary Healthcare Social Medicine and Health Policy, Lund University, Sweden

Dr. Anita Jensen is part of the research group Social Medicine and Health Policy at Department of Clinical Science & Centre for Primary Health Care at Lund University & Region Skåne in Sweden and is an Associate Professor at Nord University in Norway. She is the editor of Nordic Journal of Arts, Culture and Health and has published books, chapters, research articles, and reports on the health and wellbeing benefits of arts and culture engagement. Recent projects spans across the Nordic region focusing on the psychosocial impact of Arts on Prescription, population studies, and the development of regional arts and health strategies continuing to contribute to the intersection of arts, health and wellbeing.



Kornelia Kiss

Director, Culture and Health at Culture Action Europe, Belgium

Recent EU policy developments in the area of "Culture and Health"

From the EU preparatory action "CultureForHealth" through the "Workplan for Culture" and the "Comprehensive approach to mental health" to the upcoming EU Member States report on "Culture and Health".

Kornelia Kiss is a Head of Culture and Health at Culture Action Europe (CAE), the major European cross-cultural network and umbrella organisation representing the cultural sector towards the European Institutions. She is co-author of the recommendations part of the 'CultureForHealth Report' and advocates for this topic on a European and Member States level.



J. Matt McCrary

Scientific Staff, Hannover Medical School, Germany

J. Matt McCrary, PhD is currently appointed as Scientific Staff at the Institute of Human Genetics, Hannover Medical School (Germany); Secretary, Board of Directors and Chair, Research of the Performing Arts Medicine Association (USA); and Adjunct Lecturer at Prince of Wales Clinical School, UNSW Sydney. Dr. McCrary's diverse expertise is encapsulated by the breadth of his current projects: creation of an automated approach for commercial wearables (Garmin/Apple Watch) to reliably capture and manage autonomic nervous system responses to music (epidemiologic and clinical applications); development of new strategies to improve access and efficiency of genetic diagnostics and counselling in cancer across the European Union; and establishment of a new artistic and clinical practice guideline for hearing health in expert performing artists. His work has been recognized and supported by Fulbright (US/Australia) and Humboldt (US/Germany) Fellowships, over 100 million EUR in grants and awards from government, non-profit, and professional organizations in Australia, the European Union, Germany, the UK, and the US, and features in 40+ international media outlets (incl. Forbes, The New York Times, The Guardian, ABC Radio National (Australia)).

<https://www.researchgate.net/profile/J-Mccrary-3>

**Janet Rittermann**

Former Director of the Royal College of Music, London, UK

Janet Ritterman, Chancellor of Middlesex University in London, is the former Director of the Royal College of Music in London, where she now serves as Vice-President. During her Directorship she established the Centre for Performance Science, now recognised internationally for its research and teaching in areas related to arts and health. A founder member of the Austrian Wissenschaftsrat, she served as a member of the Aufsichtsrat of the FWF. She helped to initiate and became the first chair of the International Board for the FWF PEEK programme, the arts-based funding programme which supports innovative research in the arts in which artistic practice plays a key role. She has served as Governor and adviser to various conservatoires and academies worldwide and is known for her work on institutional development. Her contributions have been honoured with the award of the Austrian Ehrenkreuz 1. Klasse and in the UK, by being appointed Dame Commander of the British Empire for services to music.

**Eva Schurig**

Carl von Ossietzky University of Oldenburg, Germany

Examining the case studies in the Creative Health Review

The Creative Health Review (CHR) presents a diverse array of arts-based health initiatives in the UK. This paper raises important questions about the robustness of the evidence underpinning these case studies. While the CHR showcases commendable activities, the self-selected nature of the case studies may lead to biases, as they do not adhere to specific criteria for inclusion. Furthermore, some evaluations were conducted by individuals affiliated with the respective charities or programs, which raises concerns about objectivity and independence.

The methods of evaluation vary widely, encompassing everything from anecdotal reports without clear methodologies to randomized controlled trials. However, the lack of differentiations in presentation within the CHR can obscure the quality of the evidence, making it challenging for readers to assess the reliability and validity of the findings.

To enhance the credibility of future reports, it is recommended that a more strategic approach be employed in selecting case studies. Prioritizing those that have undergone thorough scientific evaluation would not only strengthen the evidence base but also support more informed decision-making regarding the integration of arts in health initiatives.

Eva Schurig is a postdoctoral research assistant at the Carl von Ossietzky Universität Oldenburg. Her experiences cover qualitative as well as quantitative research in areas such as mobile music listening, musical activities of young people or hearing health. She is part of the editorial board of the Yearbook of Music Psychology and the journal MAiA.
<https://orcid.org/0000-0002-3710-7966>



Jill K. Sonke

Director of Research Initiatives and a Research Professor in the Center for Arts in Medicine, Florida University, USA

Arts for EveryBody: A case example of a national values-based mixed methods study in the US

One Nation/One Projekt was a large-scale national arts in public health initiative undertaken between 2021-2025 in the US. The 18-city initiative included a complex research agenda designed to answer the primary question, How can arts participation in communities influence social cohesion and wellbeing? The research included 12 unique studies, with findings from six of those studies integrated and resulting in a theory of change that asserts and explains relationships between community-based on quantitative findings, lived experiences, perceptions, and narrative testimonies. Data included over 13,000 survey responses, 21 focus groups, 30+ in depth interviews, short person-on-the-street interviews, analyses of individual expressions in art works. The values-based research was anchored in a commitment to community engagement prioritizing capacity-building and local ownership of the research in process. The approach sought to advance equity in research methodologies, recognizing the historical legacy of extractive and harmful practices in the United States. By centering ethical, participatory frameworks, the initiative aimed to model how researchers can move beyond traditional paradigms to foster meaningful partnerships and to generate reliable findings while producing tangible, immediate benefits for the communities involved.

Jill Sonke, PhD, is Director of Research Initiatives and a Research Professor in the Center for Arts in Medicine at the University of Florida, Director of National Research and Impact for the One Nation/One Project initiative, and Co-director of the EpiArts Lab, a National Endowment for the Arts Research Lab in partnership with University College London. She serves as an Affiliated Researcher in the WHO's Jameel Arts & Health Lab and served during the COVID-19 pandemic as a senior advisor to the Center for Disease Control and Prevention (CDC). She is an affiliated faculty member in the UF School of Theatre & Dance, the Fixel Institute for Neurological Diseases, and the Center for African Studies, as well as an editorial board member for Health Promotion Practice journal. Dr. Sonke is a dancer and an amateur musician, a mixed methods researcher with over 100 publications, and has 30+ years of leadership in the field of arts in health. She is the recipient of numerous awards and over 350 grants for her programs and research in the arts and health.



Leonhard Thun-Hohenstein

Chair of the Association of the Friends of Child and Adolescent Psychiatry (Verein der Freunde der Kinder- und Jugendpsychiatrie, VdFKJP); Co-Chair, SIAM, Austria

Child and adolescent psychiatrist; pediatrician; psychodrama therapist; Founder and head (2004-2021) of Univ. Department for Child and adolescent psychiatry in Salzburg at PMU/SALK; CAP-Coach and Supervisor; artist



Hannah Waterson

*Research and Policy Manager,
National Centre for Creative Health, UK*

The Creative Health Review – Exploring how policy can embrace creative health in the UK

‘The Creative Health Review – how policy can embrace creative health’ was published in December 2023 by the National Centre for Creative Health and the All-Party Parliamentary Group on Arts, Health and Wellbeing. The review focuses on how creative health can help to address pressing challenges in health, social care and more widely in the UK context. It summarises the evidence for creative health in relation to key themes, including mental health and wellbeing, health inequalities, social care, education and end-of-life care. It provides examples of the work in practice and makes recommendations to policymakers to maximise the potential creative health and ensure its benefits are available to everyone.

This presentation will explain the context for the Creative Health Review and our aims and approach, including how we incorporated lived experience expertise throughout the process. We will set out the key findings and recommendations to policymakers, the impact of the Review, and how we are planning to take the work forward.

Dr Hannah Waterson is Research and Policy Manager at the National Centre for Creative Health (NCCH) and an Honorary Research Fellow at University College London, working on the Mobilising Community Assets to Tackle Health Inequalities Programme.

After completing a PhD related to health promotion and policy, she worked in policy research and media roles before joining the University of Manchester as a lecturer in healthcare sciences, working in research and evaluation on a range of projects related to public health and health inequalities. There she developed an interest in creative health, co-developing and delivering a course on arts and public health, before joining NCCH in 2022.

PERFORMERS



Vivien Conacher

Mezzo Soprano, London/Salzburg

Australian mezzo-soprano Vivien Conacher is based between the cities of London and Salzburg. She has received critical acclaim for her vibrant stage performances, with roles have including the title role in *Carmen*, Fidalma *Il Matrimonio Segreto*, Dorabella *Così fan Tutte*, Cherubino *Le Nozze di Figaro*, Giovanna *Rigoletto*, Nicklausse *Il Conte d'Hoffmann*, Rivka *Fiddler on the Roof*, Filippjevna *Eugene Onegin*, Little Buttercup *HMS Pinafore*, Penelope *Il Ritorno di Ulisse in Patria* and Sorceress *Dido and Aeneas*. She has been engaged by companies including Opera Australia, Grange Park Opera, Iford Opera, Opera Brava (UK tour), Pop Up Opera (UK tour), and Wexford Festival Opera in Ireland.

Notable concert appearances include singing *Schwertleite Die Walküre* in a Wagner Concert with Stuart Skelton for Tait Memorial Trust, Handel's *Anthem for the Foundling Hospital* and *Ode for the Birthday of Queen Anne* at the Foundling Museum directed by Richard Hetherington (ROH), a recital of French art song and chamber music at the National Portrait Gallery for the Concordia Foundation, and concerts for Leighton House Museum, St-Martin-in-the-Fields, St James's Church Piccadilly, Bloomsbury Festival, and Devon Opera.

Vivien has been a Concordia Foundation artist, a Tait Memorial Trust Awardee, a finalist in the British Song Prize at the London Song Festival, and a recipient of awards from the Tillet Trust, Kathleen Trust, and Opera & Arts Support Group in Sydney.

In addition to performing, Vivien is a professional event producer with experience programming concerts, interdisciplinary performances, and cultural festivals. Vivien is also the Founder/Director of [Songhaven](#), a popular dementia-friendly concert series in London and is an active campaigner and spokesperson for providing older people and people living with dementia with accessible, professional music experiences that are delivered in a relaxed and welcoming atmosphere.



Valerie Oberleithner

Paris, France

Valerie Oberleithner is an Austrian choreographer, performer and coach living in Paris.

She studied literature and philology at the Karl-Franzens University in Graz, Austria and contemporary dance at the Anton Bruckner Private University in Linz, Austria.

In 2007 she received the danceWEB scholarship.

Valerie worked with internationally renowned choreographers and companies such as Jennifer Lacey (FR\US), SUPERAMAS (FR\AT), Boris Charmatz (FR), Ivana Mueller (FR\HR), Amanda Pina (AT\CL), etc.

She is teaching choreography and dance across Europe at schools, universities and international dance festivals.

In Valerie's recent artistic works she puts her main interest on the exploration of choreographic tools and dance - based practices finding out about their potential to promote empowerment, well-being and to develop resistance in the realm of body politics.

Valerie's work has been shown at renowned venues and international festivals such as the Palais de Tokyo, Paris, the ImPulstanz Festival, Vienna, the eXplore Festival, Bucharest and the imagnetanz Festival, Vienna.

Since 2019 Valerie is part of the Happynest Platform, an artist-for-artist project that supports emerging artists from Hauts-de-France. Valerie engages herself in the longterm research project "somatics for curators" with Univ.-Prof. Nicole Haitzinger.

Valerie is part of the Fare 2.0 project at the theater l'Oiseau Mouche, Roubaix France as accompanying artist.

Valerie collaborates with film makers such as Valeria Bruni Tedeschi, Catherine Corsini, Florian Pochlatko, a.o. as a coach for performative presence and choreography.

Since 2023 Valerie is a member of SIAM (Salzburg Institute Arts in Medicine)

ORGANIZER



Katarzyna Grebosz-Haring

Senior Scientist in the Inter-University Organization Arts and Knowledges, Paris Lodron University of Salzburg / Mozarteum University Salzburg; Co-Chair, SIAM; Co-Chair International Network for the Critical Appraisal of Arts and Health Research, Austria

Dr. Katarzyna Grebosz-Haring is currently a Senior Scientist in the Inter-University Organization *Arts and Knowledges*, Paris Lodron University of Salzburg / Mozarteum University Salzburg and at the Department of Art History, Musicology and Dance Studies at the Paris Lodron University of Salzburg. She studied music pedagogy, music therapy, violin and music and movement pedagogy in Poland and Austria, received her doctorate in musicology at the Mozarteum University Salzburg and habilitated in systematic musicology at the Paris Lodron University of Salzburg. She is director of the [Salzburg Institute for Arts in Medicine \(SIAM\)](#) and co-chair of the [International Network for the Critical Appraisal of Arts and Health Research](#). Psychophysiological, socio-psychological and aesthetic issues of music and arts with special reference to vulnerable groups, such as children and young people with mental illnesses or older people with neurodegenerative diseases are in the centre of her research interests.



Leonhard Thun-Hohenstein

Chair of the Association of the Friends of Child and Adolescent Psychiatry (Verein der Freunde der Kinder- und Jugendpsychiatrie, VdFKJP); Co-Chair, SIAM, Austria

Please see above for the biography



Stephen Clift

*Professor Emeritus, Canterbury Christ Church University;
Visiting Professor, York St John University;
Visiting Professor, University of Leeds;
Professorial Fellow, Royal Society for Public Health, UK;
Co-chair, International Network for the Critical Appraisal of
Arts & Health Research.*

Please see above for the biography



Mary Helen

Director, Health, Salzburg Global

Mary Helen Ribeiro Pombo is the director, health, leading the health programs at Salzburg Global. At the organization, she focuses on enabling innovative collaborations to tackle complex global health and social challenges. In her role, she leads on the development of Sciana - The Health Leaders Network along with other health programs. Mary Helen brings nearly a decade of experience contributing to global health, international development and gender initiatives in Africa, Europe, Latin America, Middle East and the US. Prior to joining, she led health system strengthening initiatives within various international health sector communities at Imperial College London and the International Society for Pharmacoeconomics and Outcomes Research (ISPOR). Earlier in her career, she undertook a broad range of interdisciplinary consultancies with the Food and Agricultural Organization (FAO) of the UN, the European Union's institute for gender equality (EIGE), Fundacion Paraguaya and the Consortium on Gender, Human Rights and Security. Mary Helen Holds an M.Sc. in health policy, planning and financing from the London School of Economics (LSE) jointly with the London School of Hygiene and Tropical Medicine (LSHTM) as well as an M.Sc. in gender, development and globalisation from LSE.



Nancy Smith

Director, Development and Philanthropy, Salzburg Global

Nancy R. Smith is the director of development and philanthropy. From 2001 to 2014, she served as director for philanthropy and gender at Salzburg Global. In 2014, she started her own independent consulting practice. She continued to work with Salzburg Global on multiple programs and projects in her consulting capacity. In addition, Nancy has worked with a number of international non-profit and philanthropic organizations, providing strategic analysis, communications, fundraising and development support, and has also taught courses at the University of Applied Sciences in Salzburg. Her most recent project was directing the Climate Action Pledge, an initiative of Global Friends Philanthropy and Tse Foundation to deepen and expand climate philanthropy. Previously, Nancy worked for Girls Incorporated, a national youth development organization based in New York, and also worked with the UN Division for the Advancement of Women (now part of UN Women). She earned a B.A. in politics from Mount Holyoke College in Massachusetts and an M.A. in international relations from the University of Lancaster in England.



Kyle Tyler Powell

Program Intern, Salzburg Global

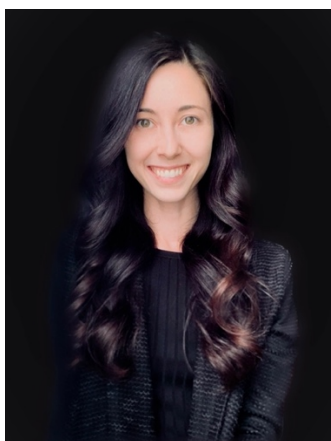
Kyle Powell is a Program Intern at Salzburg Global. He assists with programs such as the Global Citizenship Alliance Seminar and other events. Kyle was previously involved in a student organization called Mozaiko, in which he facilitated educational intercultural events for university students. Kyle holds a B.S. in computer science from Virginia Polytechnic Institute and State University.



Júlia Escrivà Moreno

Program Associate, Health, Salzburg Global

Júlia Escrivà Moreno is a program associate with the Health team at Salzburg Global. She closely works with the director on the research, planning, and execution of Health program activities, and assists with communication, network engagement and collaboration. She spent four months as a communications intern at Salzburg Global, supporting the Public Affairs team. Her background includes internships at prominent international organizations such as the European Parliament and the United Nations Association of Spain. Júlia holds a bachelor's degree in translation and interlinguistic mediation from the University of Valencia and a master's degree in international relations, security, and development from the Autonomous University of Barcelona, Spain. She is passionate about feminism, equality and human rights.



Bernadette Ellen Lang

Staff member, Salzburg Institute for Arts in Medicine (SIAM)



Ingeborg Schrems

Staff member, Arts & Knowledges, Paris Lodron University Salzburg / Mozarteum University Salzburg



Sara Garlich

*Student assistant, Arts & Knowledges, Paris Lodron
University Salzburg / Mozarteum University Salzburg,*



Magdalena Maria Bawart

*Student assistant, Arts & Knowledges, Paris Lodron
University Salzburg / Mozarteum University Salzburg*



Eleanor Pesl

*Assistant, Salzburg Institute for Arts in Medicine (SIAM),
International Network for the Critical Appraisal of Arts &
Health Research*

Eleanor Pesl studies Law & Business at the University of
Salzburg

**Beth Pertiller**

*Managing Director, Operations & Org. Development,
Salzburg Global*

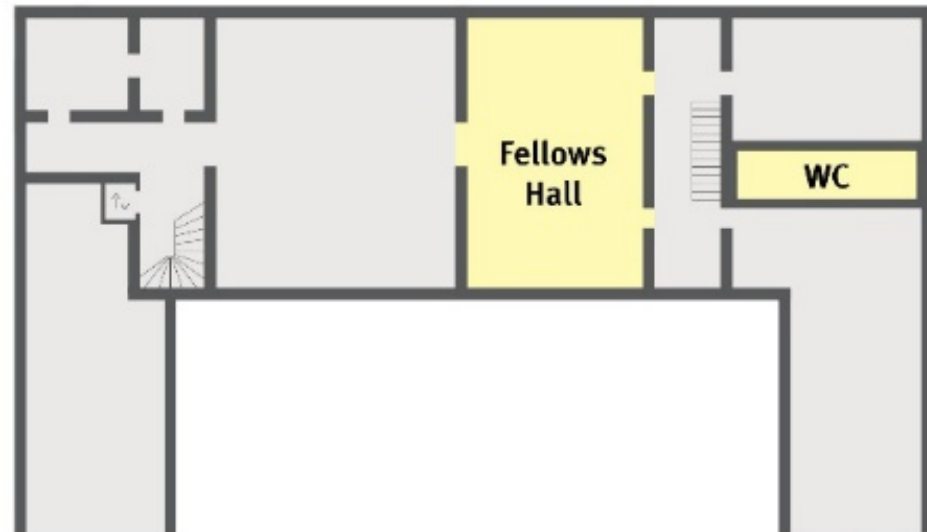
Beth Pertiller is managing director, operations & organizational development and leads the operating functions and strategies of Salzburg Global. She is responsible for developing HR strategy, Diversity, Equity and Inclusion initiatives and information technology at Salzburg Global. Before joining Salzburg Global, Beth spent 15 years working for several start up social enterprises. During her tenure at Recyclebank, an environmental-social community platform to increase recycling, Beth scaled up their systems, helping to expand their reach from 25,000 to 3.1 million households. Prior to Recyclebank, Beth was acting executive director at Greensgrow, a nationally recognized leader in urban farming that cultivates social entrepreneurship and community greening in Philadelphia neighborhoods. She received her B.A. in Russian and East European studies from the University of Pittsburgh, USA and is a certified yoga instructor.

Meierhof Floor Plan

GROUND FLOOR



FIRST FLOOR



Hotel Wifi Passwort:
LEOPOLD1947

